

INFORMATION TECHNOLOGY INFRASTRUCTURE

DATA TYPES



BACKGROUND

In Africa, very few nations have information technology (IT) infrastructure and services comparable to the United States and Europe. As a result, many African cities present a wide range of IT investment opportunities.

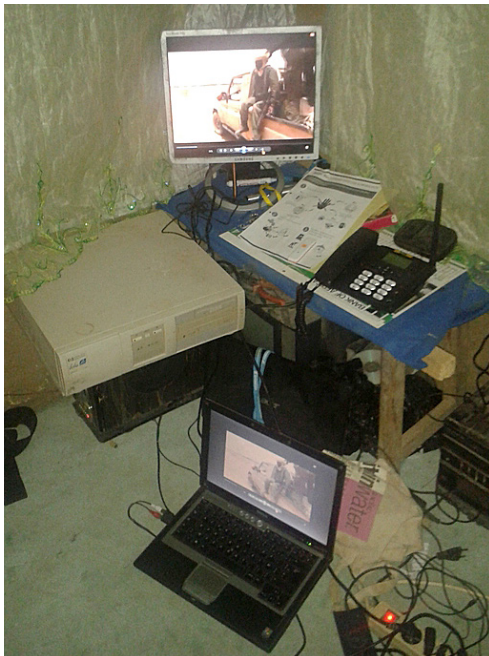
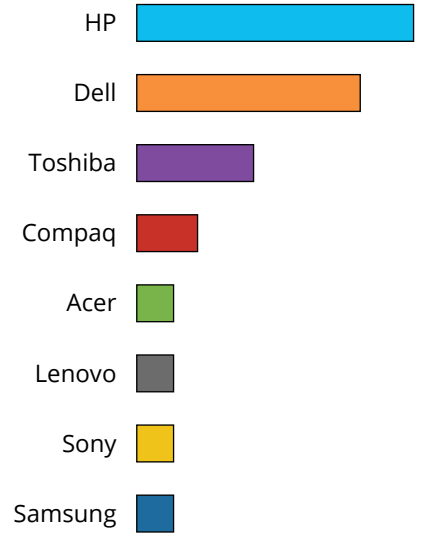
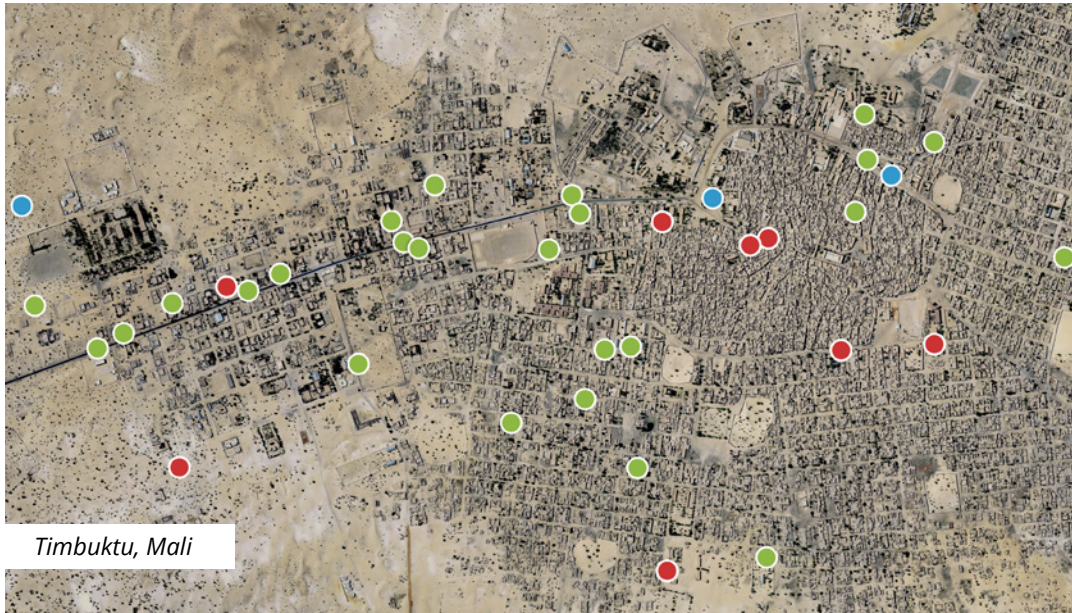
CHALLENGE

In 2014, an IT services company planned to invest in publicly-accessible IT infrastructure in Timbuktu and Gao, Mali. However, given the security concerns and the remoteness of these areas, the company did not have the means to establish a market baseline to determine the appropriate types of IT investments to pursue.

Public Internet Price



PC Manufacturers



Internet Cafe Equipment
Timbuktu, Mali

SOLUTION

Spatial Networks used a team of indigenous professionals to conduct an IT survey of locations with publicly-accessible Internet in Timbuktu and Gao. The field team geo-located 49 locations that provided Internet services, and also collected vital details of the existing IT infrastructure, such as manufacturer, model, condition of the equipment, switch capacity, and Internet rate charges per hour.

Armed with this data, Spatial Networks was able to determine the neighborhoods in need of public Internet and the locations with the switch capacity to support additional connections. Spatial Networks also identified locations with Internet that required new computers, the most common computer manufacturers and models, and the average price per hour for public Internet access if new locations are established.

By fusing the collected data, Spatial Networks provided the customer a detailed market baseline of the publicly-accessible IT infrastructure in Timbuktu and Gao to inform future decisions and investments to promote competitive market advantage.



Spatial Networks

MISSION

At Spatial Networks, Inc., we leverage geography to solve challenges facing the global marketplace. Specializing in acquiring unique information unavailable via conventional data-harvesting methods, we deliver the authentic, accurate, relevant, and timely information that our customers expect.

CUSTOMERS



STATE & LOCAL
GOVERNMENT



COMPETITIVE &
BUSINESS INTELLIGENCE



CRITICAL
INFRASTRUCTURE



SUPPLY CHAIN
LOGISTICS



OIL, GAS &
ENERGY



INTELLIGENCE
& DEFENSE